



## MESSAGE FROM THE FOUNDER AND PRESIDENT

2018 was a year of incredible progress. Each day was filled with purpose as we worked to create our next generation sanctuary, Elephant Refuge North America (ERNA), in Attapulgus, Georgia.

We were humbled by the warmth of the welcome we received from our neighboring communities in Georgia and Florida. It's truly wonderful to be surrounded by neighbors who understand and wholeheartedly support our mission and philosophy.

The mild winters of this South Georgia location were a major factor in our decision to locate here. As temperatures remained solidly in an elephant's comfort zone day after day, we knew we'd made the right choice. Regardless what time of year our new residents arrive, they will be able to spend their days outside exploring the habitat and discovering their elephantness, some of them for perhaps the first time.

Elephants love water. We were pleasantly surprised to find that the rainy season here is similar to the monsoon season in Asia, an unexpected plus for the Asian elephants who will call ERNA home. We have an abundance of water features for them to enjoy; torrential downpours cause the ponds to crest their banks and send waves of fresh water through the spillways of the lakes. Elephant paradise.

We want to be good stewards of this beautiful land. In 2018 we consulted with experts in land use and habitat restoration and have adopted their recommended best practices.

With Mundi, the 35-year-old female African elephant living at the zoo in Mayagüez, Puerto Rico, set to be our first retiree, construction raced at breakneck speed.

We watched ERNA literally materialize before our eyes, from the double fencing system that will give our future residents safety and freedom to our first quarantine barn full of features, large and small, to support elephant comfort and rehabilitation.

At the same time, we continued to build EAI as an organization with the establishment of a new Integrative Health Team. The team's members, come from a wide range of modalities, countries and backgrounds. Their depth of knowledge and expertise will ensure that EAI and ERNA lead the way in innovative approaches to elephant care.

With so much accomplished and so much to look forward to, we never forget that these positive developments are possible because of the support you, our friends and donors, unfailingly give us. Whether you've contributed financially, offered in-kind assistance or helped us weather setbacks with words of comfort and encouragement, you are a part of everything we accomplish. Together we are building a new future for elephants.

Thank you,

A handwritten signature in a cursive, greenish-brown ink that reads "Carol Buckley".

Carol Buckley  
Founder and CEO

## ELEPHANT REFUGE NORTH AMERICA (ERNA)

Elephant Refuge North America is well on its way to completion as we made considerable progress constructing the barn and fences. Thanks to a generous \$100,000 grant from Nature Defense Foundation (NDF), construction of the barn began in March 2018. By year's end the state-of-the-art barn was nearly completed.

In October 2018, Hurricane Michael damaged more than 5,000 feet of the specially designed double fence system that encompasses our 850-acre refuge. We quickly raised the funds for repairs and volunteers worked alongside construction professionals to remove the downed trees that caused the damage and return the fence to its original condition.

Hard-working supporters of all ages came to ERNA for Volunteer Days to help ready the property for the elephants who will soon call Georgia home. We also welcomed neighbors and supporters to explore our land by wheel and foot on our special Bike and Hike the Elephant Trails days.

## MUNDI'S MOVE

We spent a large portion of 2018 coordinating with the Puerto Rico government and working on logistics to retire Mundi, a 35-year-old African elephant, to ERNA. While the travel logistics and preparations for Mundi's move from her current home at the Dr. Juan A. Rivero Zoo in Mayagüez were in progress, EAI and supporters worked tirelessly to prepare ERNA for her arrival.

A special thanks to PAWS (the Performing Animal Welfare Society) for donating the use of its transport crate, which reduces the cost of the move by \$50,000.

## GETTING TO KNOW OUR NEIGHBORS

The local community continues to embrace ERNA. Carol made presentations about elephants and ERNA to a number of civic and school groups, including the Bainbridge, Georgia, Lion's Club; Quincy, Florida, Garden Club; and Kiwanis Club in Havana, Florida. In March, Carol also spoke about elephant values, physiology and culture at the Thomas County Public Library in Thomasville, Georgia.

In August, the Friends of Georgia Elephants held a Barn Warming Trunk Show to raise funds for completion of the elephant barn. The show offered special limited-edition items for purchase or bid, including beautiful Celadon elephant mugs handmade in the mountains of Northern Thailand, which were commissioned for and donated to EAI by Carolyn and Bob Braddock.

## FREE THE ELEPHANTS KEYNOTE

In April, Carol keynoted the Free the Elephants Conference and Film Festival in Portland, Oregon, speaking on "[Revolution of a Movement — Creating Real Change for Elephants](#)." She also introduced a screening of "Unchained" and joined a panel on how local communities in Asia can help bridge cultural divides and heal human-elephant conflict.

## ASIA OUTREACH

**EAI's efforts to help captive-held elephants in Asia continue.** At the invitation of Sri Lanka's finance ministry, Carol visited Zoo Dahiwala and Pinnawela Elephant Orphanage to lay the groundwork for converting both facilities to chain-free and dominance-free management.

In Nepal, Carol and EAI have been invited to design chain-free corrals and train mahouts in non-dominance management at the Barahi Jungle Lodge. The facility will be the second privately owned lodge in the country to go chain-free.

Carol continued to teach foot care workshops, organized by the Nepal Department of National Parks and Wildlife Conservation, the Elephant Owners Association in Nepal and the Elephant Conservation Center in Thailand. EAI also established an elephant foot care internship program for veterinarians and students in Nepal.

Additionally, EAI is a sponsor of Dr. Bablu Thakur's year-long research project, "Foot Infections in Captive/Working Asian Elephants Engaged in Tourism & Wildlife Patrolling Duties in Nepal." Dr. Thakur is a veterinary science scholar in the Department of Surgery and Pharmacology at the Agriculture and Forestry University in Rampur, Chitwan, Nepal.

## UNCHAINED

**"UNCHAINED," the documentary about EAI's work in Asia, continues to screen across the United States and throughout Asia.** Carol appeared at several screenings to lead a discussion about improving the lives and welfare of working elephants.

## MEDIA

**ERNA enjoyed considerable attention from media outlets in both the United States and abroad.**

- Florida and Georgia ABC affiliates and the Tallahassee CBS affiliate ran stories on ERNA and its volunteer days.
- *Home & Yard Magazine* featured ERNA and Carol's elephant welfare work.
- *Tallahassee Democrat* readers learned how Mundi will make the trip from Puerto Rico to ERNA. Students from the Savannah College of Art and Design interviewed Carol on the same topic for a documentary film.
- Puerto Rico's newspaper *Primera Hora* gave significant coverage to Mundi's move to ERNA, including sending a camera crew to visit ERNA and interview Carol.
- *Clean Malaysia*, an independent online news site, quoted Carol on the design flaws of the elephant exhibit at the Kemaman Zoo in Terengganu.
- The UK's *Daily Mirror* reported on the efforts of activists in Sri Lanka to encourage the government to use Carol's work with captive elephants in Nepal as a model.

## NOTABLE DONORS

We would like to acknowledge several donors who have made significant contributions to EAI's work this year.

- Our deepest gratitude goes to Sarah Shaw, founder of Nature Defense Foundation (NDF). NDF's generous grants and matching gift were essential in helping us to near completion of the elephant barn.
- We are sincerely grateful for the continued support of Bob Barker and his DJ & T Foundation for completion of the ERNA elephant barn.
- Our sincerest appreciation goes to Leslie Schreiber for contributing to Elephant Refuge North America's ability to accommodate interns and visiting professionals.
- We extend our deepest sympathy to the family and friends of Lisa Kucukdogerli and Kathleen Cavanaugh, and our deepest gratitude for their generous bequests for general support.
- A huge thank-you goes to GreaterGood.org for their support of our Chain Free Means Pain Free Program and our efforts in creating Elephant Refuge North America.

## BOARD OF DIRECTORS

### **Carol Buckley**

Founder, President & CEO, Elephant Aid International  
Attapulgus, Georgia

### **A. Christy Williams, Ph.D.**

Country Director WWF Myanmar  
Yangon, Myanmar  
Former Program Coordinator, WWF Asian Elephant and Rhino and Action Strategy (AREAS)  
Kathmandu, Nepal

### **Leslie Pon Tell-Schreiber**

Former Co-Director, Bowmanville Zoo, Ontario, Canada  
Former Assistant Director, Exotic Animal Training and Management Program, Moorpark College  
Ojai, California

## EXECUTIVE COUNCIL

Allison Argo  
Brewster, Massachusetts

Louise Kohler  
Nashville, Tennessee

Mary Anne Nyquist  
Nashville, Tennessee

Katy Chudacoff  
Franklin, Tennessee

Judith Newby  
Nashville, Tennessee

Sarah Shaw  
Sausalito, California

Kate Elliott  
South Salem, New York

Jonathan Nyquist  
San Francisco, California

George Shick  
Nashville, Tennessee

Debbie Emory-Utzig  
Hermitage, Tennessee

Kate Nyquist  
Nashville, Tennessee

Susan Stewart  
Nashville, Tennessee

## ADVISORY COUNCIL

Allison Argo  
Founder/CEO  
Argo Films  
Brewster, Massachusetts

Kaushik Barua  
Founder/CEO  
Assam Elephant Foundation  
Assam, India

G.A. Bradshaw, Ph.D.  
Founder & Executive Director  
The Kerulos Center  
Jacksonville, Oregon

Otto Fad  
Animal Behavior and Welfare  
Specialist  
Precision Behavior  
Tampa, Florida

Dr. Kamal Gairhe, DVM  
Senior Veterinarian  
Chitwan National Park  
Chitwan District, Nepal

Gigi Gaulin, DVM  
Veterinarian  
Attapulgus, Georgia

Alex Godfrey  
Human-Elephant Conflict  
Program Manager & Smart  
Patrol Systems Researcher  
Zoological Society of London  
Kanchanaburi, Thailand

Dr. Deepani Jayantha  
Country Representative  
Elemotion Foundation  
Colombo, Sri Lanka

Colleen Kinzley  
Curator  
Oakland Zoo  
Oakland, California

Kamal Jung Kumar  
Chief Conservation Officer  
Shivapuri Nagarjun National  
Park  
Department of National Parks  
and Wildlife Conservation  
Shivapuri Nagarjun, Nepal

Keith Lindsay  
Collaborating Researcher  
Amboseli Trust for Elephants  
Oxford, UK

Cynthia Moss, Ph.D.  
Director  
Amboseli Trust for Elephants  
Nairobi, Kenya

K.K. Sarma, Ph.D.  
Professor, Department of  
Surgery and Radiology  
College of Veterinary Science  
Assam Agricultural University  
Khanapara, Guwahati  
Assam, India

Peter Stroud  
Zoological Consultant/Captive  
Elephant Specialist  
Melbourne, Australia

Naresh Subedi  
Senior Conservation Officer  
National Trust for Nature  
Conservation  
Kathmandu, Nepal

## INTEGRATIVE HEALTH TEAM

Liv Baker, Ph.D.  
Founder and Executive Director  
Institute for Compassionate Conservation  
Sydney, Australia

Gigi Gaulin, DVM  
Elephant Refuge North America  
Attapulgus, Georgia

Wendy Jensen, DVM  
Owner  
Jensen Homeopathic Veterinary Practice  
Bow, New Hampshire

Ali Mobasher, Ph.D.  
Professor, Musculoskeletal Physiology  
School of Veterinary Medicine at the University of  
Surrey  
Guildford, United Kingdom

Richard Patton, Ph.D.  
President  
Galisteo Land and Livestock, Ltd  
Santa Fe, New Mexico

Kushal Konwar Sarma, DVM, M.V.Sc, Ph.D.  
Professor of Surgery and Radiology  
College of Veterinary Science, Assam Agricultural  
University  
Assam, India

Huisheng Xie, DVM, Ph.D.  
Clinical Professor, Integrative Medicine Service  
College of Veterinary Medicine, University of Florida  
Gainesville, Florida

## HOW TO SUPPORT ELEPHANT AID INTERNATIONAL

Elephant Aid International is built on the belief that small changes make a huge difference. Whether you prefer to contribute funds, buy or underwrite items from our Wish Lists or offer your skills, we appreciate your support.

We welcome donations of any amount.

You can donate:

- through our website, [www.elephantaidinternational.org](http://www.elephantaidinternational.org).
- by check or money order payable to Elephant Aid International. Send to:

Elephant Aid International  
PO Box 283  
Attapulgus, GA 39815

Other ways you can support EAI include:

- Funding items on the EAI Wish List or individual Project Wish Lists by purchasing items and shipping them to us at:

Elephant Aid International  
404 Laslie Road  
Attapulgus, GA 39815

- Creating fundraisers through your Facebook Page
- Making in-kind donations
- Shopping Tarra's Treasure Truck online store at <http://bit.ly/TarrasTreasure>.
- Arranging planned giving. If you would like to include EAI in your will, please contact [info@elephantaidinternational.org](mailto:info@elephantaidinternational.org) for information regarding our planned giving program.

For more information about Elephant Aid International, please visit [www.elephantaidinternational.org](http://www.elephantaidinternational.org) or write us at [info@elephantaidinternational.org](mailto:info@elephantaidinternational.org).

Elephant Aid International is a 501(c)(3) nonprofit organization and a registered California State Charity as required by law. All donations made in the United States are tax deductible.

## OUR MISSION

Elephant Aid International (EAI), a 501(c)(3) nonprofit organization, was founded by Carol Buckley in 2010 to create a paradigm shift that will foster change in beliefs and approaches to the care and management of elephants throughout the world.

With the combined international efforts of scientists, veterinarians, mahouts (elephant handlers), elephant caregivers and elephant welfare supporters, EAI is helping to change how the public relates to elephants, how mahouts and elephant caregivers train elephants and how captive elephants are cared for worldwide.

EAI pioneered a new system, Compassionate Elephant Care, which is eliminating antiquated, dominance-based training and resulting in improved elephant welfare.

By providing education and hands-on assistance, EAI is working to end the worldwide suffering of elephants...one elephant at a time.

## OUR GOALS

- Improve the conditions of captivity in which elephants live
- Eliminate abusive training and management
- Create alternatives to the use of chaining as a form of management
- Train mahouts in positive management techniques so they can better care for and manage their elephants
- Improve the social status of mahouts through education and job advancement
- Remove begging elephants from the streets of Asia by finding alternative livelihoods for mahouts and their families
- Facilitate the establishment of lifetime elephant care centers (sanctuaries)

## OUR PROJECTS

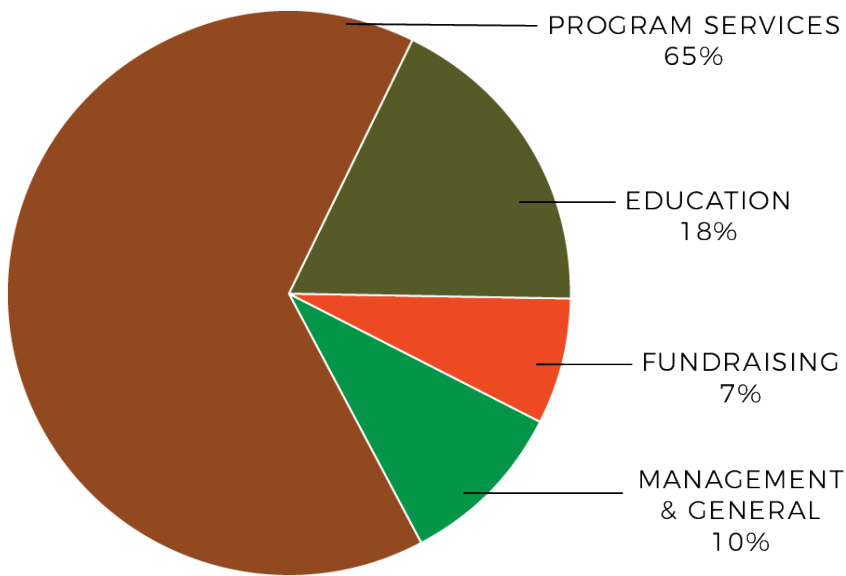
- Building chain-free enclosures to eliminate the antiquated and physically harmful practice of chaining elephants' feet to the ground
- Providing elephant pedicures and training mahouts in the skills necessary to support foot health and prevent life-threatening osteomyelitis
- Increasing mahouts' knowledge of elephant biology, psychology, behavior and learning style to help them develop more positive interpersonal relationships with their elephants
- Working with government agencies and NGOs to create permanent elephant care and retirement facilities
- Improving elephant stable sanitation
- Opening Elephant Refuge North America in Attapulcus, Georgia, USA



## SUMMARY OF FINANCIAL ACTIVITY 2018

<b>Public Support &amp; Revenue</b>	<b>\$817,735.00</b>
<b>Expenses &amp; Losses</b>	
<b>Program Services</b>	\$183,307.00
<b>Education</b>	\$50,757.00
<b>Fundraising</b>	\$21,158.00
<b>Management &amp; General</b>	\$25,242.00
<b>Total Operating Expenses</b>	<b>\$280,464.00</b>

## BREAKDOWN OF OPERATING EXPENSES & LOSSES



\*CAPITAL IMPROVEMENT EXPENSES FOR BARN AND FENCING CONSTRUCTION: \$494,966.00

## THANK YOU!

Elephant Aid International thanks its many supporters and partners for their incredible generosity during 2018. Our work would not be possible without you. Listed below are our current supporters – individuals, businesses, foundations and partners – who made gifts or provided services or support between January 1 and December 31, 2018. If we have incorrectly listed or omitted your name, please accept our apologies and contact us so we can correct the error. Your support is deeply appreciated.

## DONORS

Kindra Acker	Paula Bacon	Barry Biermann	Stephanie Bryan-Smith
Thomas Adams	Steven Baird	Shelly Bisanz	Debbie Buckheim
Wendy and Nick Adams	Joni Baker	Dwight Bitikofer	Charise Buckley
Nancy Adams	Cindy Baker	Stacy Blaiss	Carol Buckley
Pamela Adler	Linda Balkey	Eric Blomberg	Michael & Charise Buckley
Natalie Aitchison	Charles Banks	Steve Bohl	Lani Bullock
Linda Aldrich	Rosalyn Barber	Lisa Bohl	Thomas Burgess
James Alves	Powell Barber	Lee Bolaro	Angelica Burgos
Shirley Amitrano	Carolyn Barber-Long	Leslee Boldman	Mary Burnett
James, Corri J. & Sheridan Anderson	Karen Barletta	Glenn Bolivar	Brian Burns
Corri Anderson	Mary Barnes	John Borders	Wendy Burr
Karen Andreasen	Kimberly Barreto	Kelly Borgen	Glenda Burris
Katherine Ansell	Michael Barrows	Roberta Boyer	Angela Burroughs
Carol Anthony	Fred Bates	Samuel Boykin	Valerie Bush
Mimi Anzel	Meg Bates	Kathryn Boykin	Frances Butler
Elizabeth Aperauch	Jan Bates	Carolyn and Bob Braddock	Linda Calbreath
Al Arauz	Patricia Bates	Jennifer Bradford	Rhiannon Calkins
Maria Fernanda Arauz (Landinez)	Darlene Battaile	Charlene and W.B. Brannan	Audrey Campbell
Allison Argo	Bradley Bearman	Judith Bratt	Laura Campbell
Dan Armstrong	Lorraine Beavon	Eleanor Bravo	Faith Campbell
Rick Ashton	Hope Belles	Lisa Brennan-Smith	Melissa Campbell
Philip Auerbach	BettyLu Bendeke	Aude Breusse	Russel and Robin Campbell
Ann August	Theresa Bender	Fran Bridges	Jeanette Capotorto
Maria Azurdia	Lee Berger	Kelly Brinkman	Judy Carman
Steve Babcock	Katherine Bermingham	Beckie Brocies	Godwin Carmona
Christina Babst	Juli Bertram	Kimberly Brooks	Christine Carney
Brittany Bachmeier	Ria Betts	Matthew Brundyge	Pam Carr
	Yvonne Bevacqua		

Karen Casatelli	Lynne Crowton	Matt Draper	Jeffrey Forrest
Lisa Casterella	Lynne Crowton	Diane Drew	D.D.S., P.C.
Roby Castillo	Jennifer Cullen	Terri Ducay	Karen Foster
Sarah Castillo	JuleeAnne and Glen	Dean Dugger	Michele Foster
Kathleen Cavanaugh	Cunningham	Mickey Duncan	Jim and Betsy Fowler
Lisa Chadwick	Hope Curtis	John Dunn	Suza Francina
Dana Chappell	Carole Curtis	Ann Dwyer	Linda Francis
Jamie Chavez	Kathryn Dalenberg	Carolina Dyer	Laura Frandsen
Katherine Checkie	Pamela Damitz	Beth Eck	Glen Frandsen
Greg Chelius	Lee Damitz	Jacqueline Eichman	Martie Franklin
Susan Chenowith	Susan Damon	Catherine Elliott	Carrie Freeman
Nadine Chiechi	MaryAlice David	Kasey Elliott	David Friedlander
Karen Christian	Dina Davis	Elaine Emory	Thomas Friedman
Leslie	Suzanne Davis	Debra Emory-Utzig	Christine Frier
Christodouloupoulos	Sydney Dawson	Sharon Engel	Malissa Frischmuth
Loretta Cicio	Yvonne De Potter	Pamela Etris	Wendy Frisk
Katie & Charlie	Scott	Jamie Eubanks	Jacinta Fry
Claggett	Julia Debrececi	Linda Eulich	Lisa Frye
Rosemary Clark	Sally-Ann DelVino	Karen Evans	Paul Fryer
Deborah Clarke	Patricia Denny	Cheri Ezell	Gabrielle Gabreilli
Mae Cleveland	Rita DePuydt	Otto Fad	Phran Galante
Mary Clifford	Scott Deutsch	Mary Fairchild	Gayle Gallagher
Judy Cohen	Bryan Dey	Rebecca Faircloth	John Gallo
Adam Cohen	Nina Deyglun	Anne Fallon	Mary Gallo
Larry Coltharp	Josephine Deyo	Jennifer Fenn	Dennyse Garcia
Holly Conway	Kevin Deyo	N Aric Fine	Todd Gardner
Frances Cook	Deborah Dickson	Jennifer Finley	Gigi Gaulin
Kathy Corcoran	Julie Dickson	Jane Fletcher	Grant Gelhardt
Marlene Corlew	James Didomizio	Libbie Fletcher	Hilda Gelhardt
Ellen Corrie	Kevin Dodson	Pam Flynn	Rob Gelhardt
Laura Cotter	FLYNN Donovan	Karen Flynn-	Penelope Gerbode
Joan Cottrell	Aline Dos Santos	Silverman	Emily Geyer
Robert Craig	Robert Dowling	David Fonvielle	Lara Ghavami
Eugene Crandall	Katie Doyen-Thomas	Julie Forbes	Angie Gibson
Susan Crane	Laurie Doyle	Dillon and Julie	Susanna Gilbert
C Crawfords	Janet Doyle	Forbes	Deborah Gilbert
Mark Cross	Cher Drago	Maureen Forrest	Katrina Gilder
Cathy Cross	Anne Draper		Terri Gits

Aline Gittleman	Jenifer Hashem	Valerie Hughes	Gillian Kontos
Ariane Gogny	Maddisson Hatton	John Icenhour	Susan Korngut
Sharon Goodman	Lisa Haut	Dana Icenhour	John & Pamela Koslov
Elliott Govorchin	Willow Head	Tammy Ingram	Suzi Kraft
Deb Grant	A Hedberg	Melinda Inman	Mike Kraft
Pamela Green	Beth Hedrick	Ramona Isbell	Henry Kratt
Beth Gregory	Laretta Hefner	Vignesh Iyer	Lisa Kucukdogerli
Margaret Griffin	Gloria Heidengren	Suzanne Jackson	Nancy Kuhary
Eleanor & Taylor Griffin	Linda Heinicke	Elizabeth Jackson	Jennifer Kunz
Cynthia Griffin	Diane Heise	Kevyn Jalone	Michelle Kutschera
Charles and Debi Griffin	Tina Henize	Gayle Janzen	Kathleen Kyling
Carina Grilli	Karen Henry	Susan Jeffries	David Lacey
Amy Grinsfelder	Marilyn & John Henthorne	Dale Johnson	Cindy Lampner
Kathleen Grossart	Sandi Herman	Jill Jones	Michael and Gina Lance
Yvonne Gsteiger	Lauren Hernandez	Candace Jones	Elin Landenburger
Manon Guida	Dalia Hernandez	Kristle Kalinowski	Shelley Lane
Nancy Gumm	Cathryn Heron	Betty Karafilis	Jami Lapadula
Sarah Habayeb	Marna Herrington	Terrie Kautter	Natalie Larkin
George Hackney	Marna Herrington	Diane Kelley	Catherine Larson
Annette Hadaway	Carolyn Hesser	Margaret Kelley	Sharon Lasseter
Bernice Hadley	C.B. Hester	Barbara Kelly	Laurence Laverty
Margaret Hall	June Hiatt	Gloria Kennedy	Lynn Lawson
Barbara Hanel	Cinda Hill	Joanne Kessler	Lynne Lawson
Jeanne Hanks	Paige Hilton	Marco Kilongkilong	Lisa Leeman
Eric Hanson	Jane & Alex Hinson	Adam Kines	Julie Lester
Trish Hanson	Johnna Hodges	Stacy King	Caitlin Lewis
Alan Hanstein	James & Leigh Ann Holaway	Angela King	Carl Liebert
Lynne Harkins	Lisa Holdcroft	Helen King	Edmund Livingston
Jenny Harper	Roger Holdener	Diana Kirbo	Petra Loch
Ridge Harper	Kate Holland	David & Leigh Kirk	Frank and Suzanne Loeffler
Lucy Harris	Barbara Holtz	Beverly Kirk	Sian Lott
James Harrison	Nancy Hoppe	Winnie Kirksey	Bonnie Lovell
Beth Hart	Karen Hosford	Patricia Knauf	David Lovering
Joanne Hartough	Sandra Hubbard-LeBlanc	Sandy Knudsen	Melanie Lovering
Kalisa Harvey	Thomas & Jean Hubbs	Linda Koberstein	Sarah Lull Castillo
Jim Harvey	Sharron Huffman	Birge Koenig	
		Louise Kohl	

Leann Lusco	Olivia Meiring	Diane Nerney	Linda Parmenter
Jennifer MacDonald	Rita Meng	Therese Neumann	Margaret & John Paschal
Sharlene MacGregor	Monique Merritt-Cook	Judith Newby	Patti Patellis
Jan MacLean	Susan Messersmith	Dennie Nichols	Megan Payne
Gerry Mandel	David Michaels	Kevin & Michelle Nickens	Josh Pearson
Judy Mandelbrot	Katie Milano	Laura Nixon	Marcy Pease
Jane Mann	Mike Miller	Renee Nolan	Ann Perry
Mary Marchiafava	Michelle Miller	Jennifer Nolan	Kim Petersen
John Margerum	Carol Miller	Elizabeth Nordstrom	Dorothy Phillips
Carol Mariani	Cecelia Miller	Jody Norman	Cynthia Pierson
Donna Marshall	Jane Mills	Nancy Nortell	L. M. Pinizzotto
Elizabeth Martin	Jiri Minarik	Anne Novina	Annette PonTell
Ruth Mashewske	Kathryn Mitchell	Barbara & Tony Nozzi	Barbara Pople
Rachel Mathews	Sunny Monnig	Denise Nutt	Nancy Post
Mary Mathis	Mary Montgomery Clifford	Katherine Nyquist	Kelly Powers
Elizabeth May	Vanessa Moore	Mary Anne & Steven Nyquist	Fiona Preston
Bradford May	Sharon Moore	Tania O Connor	Valerie Preston
Terez Mays-Jones	Cara Morgan	Penny O'Connell	Lily Price
Christine McCarthy	Susan Morgan	Mary Okeefe	Linda Price
Sandra McClendon	Kaitlyn Morrill	Christine Olhats	Evie Proctor
Lorie McCracken	Rebekah Morris	Zachary Oliver	Mary Proteau
Patricia McCracken	Margaret Mueller	Sharon Oliver	Louie Psihoyos
Terry McCue	Cindy Mulkey	Joyce Opheim	Bipin Puthiyaveetil
Kelly McDannald	Lucy Muller	Karisa Orsandi	David Quadagno
Diane McDonnell	Michelle Munoz	Beatriz Ortiz	David Quadagno
Lisa McDowell	Jill Murphy	Kim Ortloff	Kay Ragan
Stephanie McEvoy	Kristen Murphy	Maria Pabon	Diane Ragans
Patricia McFarland	Kim Murphy	Douglas and Patricia Pahle	Julie Rainey
Janet McGuffey	Betty Murphy	Marco and Ann Palmieri	Judy Ranney
Carolyn McIntyre	Mona Musgrove	Steven Panella	Melissa Rau
Richard McKenzie	Archana Mutgi	Carol Pannepacker	H Steve and Rebecca Reep
Brenda McKinstry	Kristin Nam	Joanne Paris	Kristin Rehrman
Shannon McNamara	Andrew Nance	Tina Park	Abigail Rentz
Barbara McNeal	Leigh Ann Nash	Dorothy Parke	Sandy Rentz
Tabitha McNulty	Diane Nassir	Hannah Parker	Isabella Rentz
Susie Mechler	Lucy Neale		David Reppert
Danielle Meersman			Harriet Reynolds

Aimey Ribeiro	Ann Scanlin	Joanna Southerland-Mele	Nolan Tennant
Robert Richardson	Ken Schilling	Vicki Spitzer	Elcie Tennant
John and Pam Rigdon	Antoinette Schott	Eman Srouji	Kaydee Tennant
Jason Riopedre Cuevas	Leslie Schreiber	RB Srouji	Thayne Tennant
Jennifer Robbins	Julie Schroer	Jane Stanley	Scott Tennant
Justine Robertson	Danielle Schuck	Mel Stark	Lorri Tennant
Gary Robertson	Elizabeth Schuetze	Jackie Steele	Megan Tharp
Cheri Robinson	Susan Schwarz	Connie Stehling	Kerry Thielbar
Heather Roddenberry	Dennis Scott	Lisa Stepp	Gail Thomas
Rebecca Rodriguez	Sharon Scott	Suzanne Stevens	D. L. Thomas
Dennyse Rodriguez	Courtney Scott	Lorraine Stevens	Valerie Thomas
Richard Rogers	Cathy Sebastian	Rachel Stevens	Maureen Thompson
Jeinnie Rojas	Nancy Sekerak	Natalie Stevenson	Suzanne Thompson
Victoria Roquemour	Eloise Senyan	Patrick Stevenson	Jim Thykeson
Jean-Jacques Rosa	Cindi Shake	Sylvia Stewart	Lynda Todaro
Linda Rosa	Nancy Shaw	Grace Stewart	Julie Todd
Tedford Rose	Kristen Shealy	Jenna Stewart	Carole Toombs
Jeff and Janis Rosenthal	Sherry Shed	A. Kevin & Dawn Stoppello	Kim Toothman
Wendy Ross	Tom Sheehan	Tracee Strohman	Ann Margaret Torregrossa
Richard Rubin	John & Barbara Shepler	William Stroud	Margaret Towe
Adrienne Ruhl	Kathy Shimata	Susan Stuart	Fran Trulock
Shannon Runyon	Lise & Kevin Sigward	Karen Suber	Kathleen Trybus
Robert Runyon	Joan Silaco	Carol Summers	Kristin Tubb
Jim and Robin Russel	Andrew Silverman	Devin Sutcliffe	Robby Turner
Kevin Rutherford	Era Singer	Ellen Swartz	Glen Turrel-Hodges
Robin Safley	Jane Skerpan	Mia Sweeney	Ashild Valebjorg
Caroline Samalin	Kelley Smaha	Michelle Sweeney	India Van Brunt
Mike Samash	Pamela Smith	Scott Sweeney	Beth VanDusen
Lorrie Sampson	Judy Smith	Rosemary Sweetman	Susan Vann
Nanita Samuels	Carol Smith	Lavonia Talbot	Becky Vaughn
Carol Sandiford	Catherine Smith	Juanita and Nina Tally	Gary Vaughn
Martha Sapp	Phyllis Smith	Joanne Tammel	Marion Vaughn
Mary Saums	Mike Smith	Paul Taylor	Jayashree Venkatraman
Sanghamitra Savadatti	Craig Smith	Christina Temple	Tarryn Venne-Todd
Judi Sayler	Stephanie Smith	Tim Templeton	Vicky Verano
	Elissa Sosland		Jan Vertefeuille
	Maria Soto		

Philippe Vezina	Ryan Weisman	Dominique Wils	Nancy Wright
Tracy Wade	Sybil Wertheim	Maureen Wilson	Patty Wright
Rex Wade	Eve West	Lynn Wilson	Amanda Wuoti
Deborah Wall	David West	Jeri Winkleblack	Elizabeth Wyndham
Renee Wallace	Jude Westerfield	Susan Winter	Jean Wynieski
Celeste Wallnofer	Allison Wharton	Michelle Winthrop	Erin Wynn
Starling Walter	Amy Wheeler	Chris Wise	Misa Yamashita
Starling Walters	Mark Wheeler	Celeste Wiser	Edith Yelland
YING Wang	William Whitaker	Clive Withers	Dean Young
Kathleen Ward	William White	Ginger Witt	Nancy Zeidlik
Kelly Warren	Shana Whitehead	Susie Womble	Patricia Zick
Angela Waterbury	Carol Whitney	Claudia Wondra	Robert Zick
Brindle Waye	Sterling Widner	Rebecca Wong	Cherese Zock
S. A. Webster	Katherine Williams	Catherine Wood	
Martin Weinrich	Mary Williams	Pauline Wright	

## FOUNDATIONS AND COMPANIES

A.J. Smith Family Irrevocable Trust	The Leslie Miller and Richard Worley Foundation	Edward Jones
AHIMSA Foundation	The Max & Victoria Dreyfus Foundation, Inc	Elephant Soul Crafts
Bank of America Matching Gifts	The Phase Foundation	Good Life Bracelets
Central Indiana Community Foundation	The Pollack Family Gift Fund	Health Products and Yogurt Too
DonateWell	The Seattle Foundation	LA Goal
Fidelity Charitable Gift Fund	The Serengeti Foundation	Lucky 7 Tattoo
Give With Liberty	The Trico Foundation	Mercer Street Design Works
Greatergood.org	The Wildcat Foundation	National Financial Services
Jonathan & Kathleen Altman Foundation	Triad Foundation, INC.	One Puertorican Tail at a Time
Nature Defense Foundation	Victoria Sujata Charitable Fund	Petrovna Productions LLC
Network For Good		Red Hills Powersports
Pledgeling Foundation	A Higher Balance	Reiki Orange County
Snively Family Trust	Abundance Wellness Center	Susquehanna International Group, LLP
The D. Lane & Anwyl Bates Foundation	Bainbridge Lions Club	The Clarke Agency
	Colquitt Garden Club	William Brothers
	Dovetail Design Works	

## IN KIND DONORS

Nancy Adams	Enjoy Life Thrift Store	Mary Anne Nyquist
Allison Argo	Denise Fletcher	Judy Perry
Holle Boykin	Dex Goodwin	Strategic Digital Communications, LLC
Sam Boykin	Gelhardt Graphics	Nancy Richards
LaRue Boykin	Sara Green	Sarah Shaw
Carolyn & Bob Braddock	Lucy Harris	George Shick
Charise Buckley	Terry Hawkins	Era Singer
Roby Castillo	Deb Higdon	Mel Stark
Katy Chudacoff	Angel Johnson	Jerri Stewart
Mae Cleveland	Sherry Johnson	Susan Stewart
Melanie Connell	Bev Kirk	Adam Sugalski
Dayvis Draper	Louise Kohler	Summerhill Digital
Jerry & Anne Draper	Dawn McMillan	Melissa Thorpe
Beth Eck	Joe Munroe	Debbie Emory-Utzig
Bill and Martha Edwards	Judith Newby	Ryan Weisman
Kate Elliott	Jonathan Nyquist	Doell West
Elaine Emory	Kate Nyquist	Erin Wynn

## VOLUNTEERS

Amy Akobundu	John Garcia	Marisa Mascatelli
Holle Boykin	Gigi Gaulin	Emily Olson
Sam Boykin	Karen Glendenning	Scott Olson
Roby Castillo	Sara Green	Carol Perrone
Hope Curtis	Diona Hall	JLP Prince
Randy Danforth	Maddi Hatton	Nancy Saunders
Jessica Dempsey	Celeste Hernandez	Heather Scott
Zaria Dyer	David Hightower	Tom Sheehan
Kay Etris	Shakeyla Ingram	Nikki Slajar
Gene Etris	Jodi James	Erin VanSickle
Dillon Forbes	Cathy Jewell	Bill Whitaker
Julie Forbes	Maggie Maddox	Amy Yann